

KHSAA Basketball - Game Box Score

Lexington Christian Academy Lady Eagles vs. Elizabethtown Lady Panthers
Date: 03/12/09 Time: 12 pm EST Site: Diddle Arena-Bowling Green, KY Attendance: N

Visitors: Elizabethtown Lady Panthers

##	Name	P	FG	3 Pt	FT	PTS	ORB	DRB	TR	PF	AST	TO	BS	ST	MIN
3	Chelsea Kauffeld	G	0/0	0/0	0/0	0	0	0	0	0	0	0	0	0	DNP
5	* Dorian Downs	G	0/0	2/5	0/0	6	0	1	1	1	1	3	0	0	24:11
10	* Terra Lucas	G/F	0/0	0/0	1/2	1	0	2	2	0	3	6	0	0	28:39
12	Tara Gilpin	G	0/0	0/1	0/0	0	0	0	0	0	0	0	0	0	9:30
14	Hannah Hart	G	0/0	0/0	0/0	0	0	0	0	0	0	0	0	0	DNP
15	* Adelaide Luckett	F	3/5	1/1	0/0	9	4	1	5	4	0	5	0	3	21:58
21	* Natalie Greenwell	G	0/2	4/5	7/8	19	2	8	10	0	0	5	0	2	30:14
24	KyMBER Berrow	F/C	0/0	0/0	0/0	0	0	0	0	0	0	0	0	0	DNP
25	Denisha Nichols	F/C	0/0	0/0	0/0	0	0	0	0	0	0	0	0	0	DNP
35	Jasmine Deaderick	F/C	1/5	0/0	0/0	2	0	0	0	0	1	2	0	1	13:48
42	* Alex Jones	C	5/12	0/0	9/10	19	3	9	12	3	6	2	3	0	31:40
50	Darian Ditto	C	0/0	0/0	0/0	0	0	0	0	0	0	0	0	0	DNP
Team							2	4	6			1			
Totals			9/24	7/12	17/20	56	11	25	36	8	11	24	3	6	160
2 PT FG			1st Half	5/13	38.5%	2nd Half	4/11	36.4%	Game	9/24	37.5%				
3 PT FG			1st Half	4/7	57.1%	2nd Half	3/5	60.0%	Game	7/12	58.3%				
Free Throws			1st Half	5/6	83.3%	2nd Half	12/14	85.7%	Game	17/20	85.0%				

Home: Lexington Christian Academy Lady Eagles

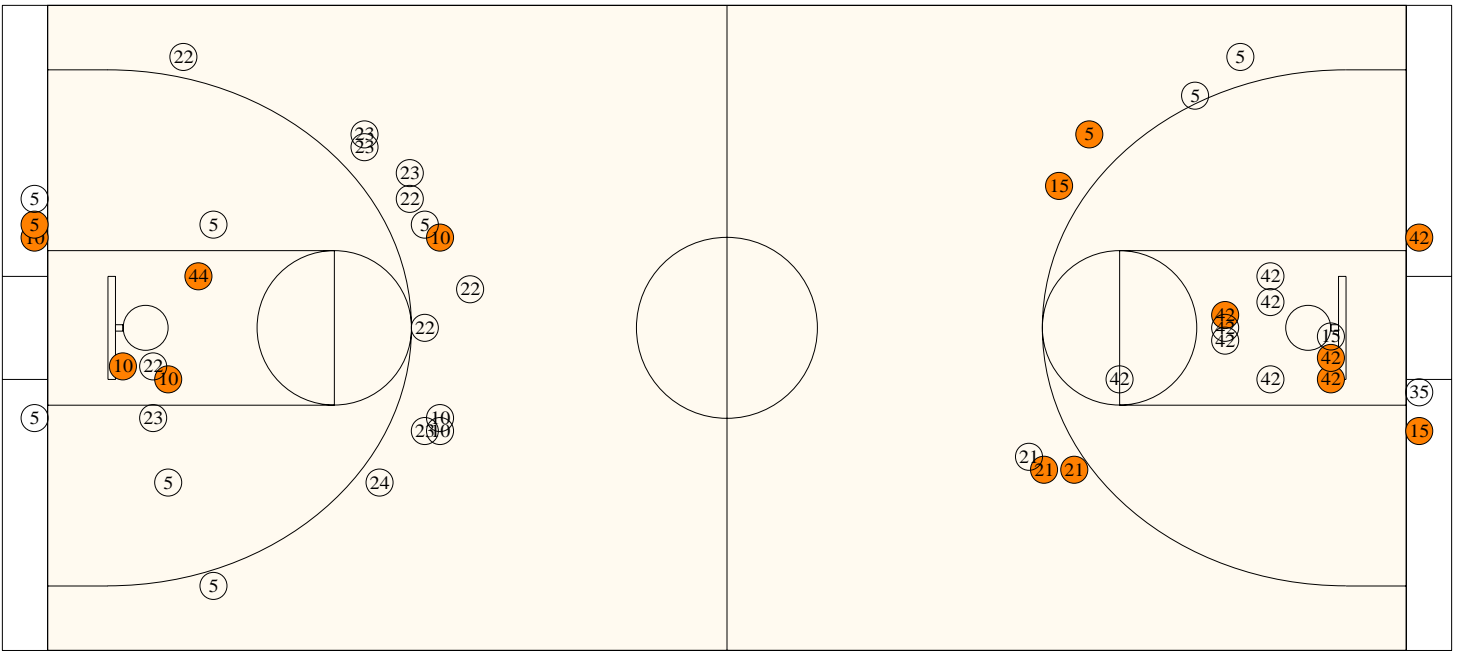
##	Name	P	FG	3 Pt	FT	PTS	ORB	DRB	TR	PF	AST	TO	BS	ST	MIN
00	Killian Rose		0/0	0/0	0/0	0	0	0	0	0	0	0	0	0	DNP
2	Mimi Purdy		0/0	0/0	0/0	0	0	0	0	0	0	0	0	0	DNP
5	* Anna Martin		6/13	0/5	2/2	14	4	4	8	3	5	5	0	5	30:17
10	* Sarah Beth Barnette		4/6	1/6	4/6	15	8	3	11	4	0	0	3	5	32:00
11	Caitlin Panter		0/0	0/0	0/0	0	0	0	0	0	0	0	0	0	DNP
12	Kristin Jacob		0/1	0/0	0/0	0	2	1	3	2	0	1	0	0	15:26
22	* Rachel Cox		0/2	2/7	0/0	6	1	0	1	4	3	3	0	0	30:35
23	* Courtney Clifton		1/6	3/13	0/0	11	1	0	1	2	1	3	0	3	32:00
24	Kelli Mitchuson		0/0	0/1	0/0	0	0	0	0	0	1	0	0	0	5:12
32	Kendall Pennington		0/0	0/0	0/0	0	0	0	0	0	0	0	0	0	DNP
33	Olivia Eastham		0/0	0/0	0/0	0	0	0	0	0	0	0	0	0	DNP
44	* Caitlin Dorton		2/2	0/0	0/0	4	1	1	2	1	0	1	0	1	14:30
55	Kelli Rhineheart		0/0	0/0	0/0	0	0	0	0	0	0	0	0	0	DNP
4	Katelin Bundy		0/0	0/0	0/0	0	0	0	0	0	0	0	0	0	DNP
42	Dorothy Panter		0/0	0/0	0/0	0	0	0	0	0	0	0	0	0	DNP
Team							2	1	3			1			
Totals			13/30	6/32	6/8	50	19	10	29	16	10	14	3	14	160
2 PT FG			1st Half	5/11	45.5%	2nd Half	8/19	42.1%	Game	13/30	43.3%				
3 PT FG			1st Half	1/14	7.14%	2nd Half	5/18	27.8%	Game	6/32	18.8%				
Free Throws			1st Half	2/2	100%	2nd Half	4/6	66.7%	Game	6/8	75.0%				

	ELIZ	LCA		ELIZ	LCA		ELIZ	LCA
Free Throw Pts	17	6	3Pt Points	21	18	Pts/Possession	0.97	0.82
Pts off Turnovers	16	20	2nd Chance Points	6	18	Pts off Bench	2	0
Total Rebounds	36	29	Team Rebounds	6	3	Dead Ball Reb	2	1
Off Rebound %	52.4	43.2	Def Rebound %	56.8	47.6	Total Rebound %	55.4	44.6
3Pt Efficiency	+33.3	-10.1	Def. Stops	39	34	Pts/Shot	1.22	0.76
Technical Fouls	ELIZ	None						
	LCA	None						
Officials	Ronnie Saylor, Steven Ridgeway, David Pentecost							

	Qtr 1	Qtr 2	Qtr 3	Qtr 4	OT 1	OT 2	OT 3	OT 4	Total
Elizabethtown Lady Panthers	14	13	12	17	0	0	0	0	56
Lexington Christian Academy Lady Eagles	9	6	23	12	0	0	0	0	50

Largest Lead LCA 15 **ELIZ** 27 (12 pts) **Lead Changes** 1 **Number of Ties** 1
Comments: None

FIRST HALF



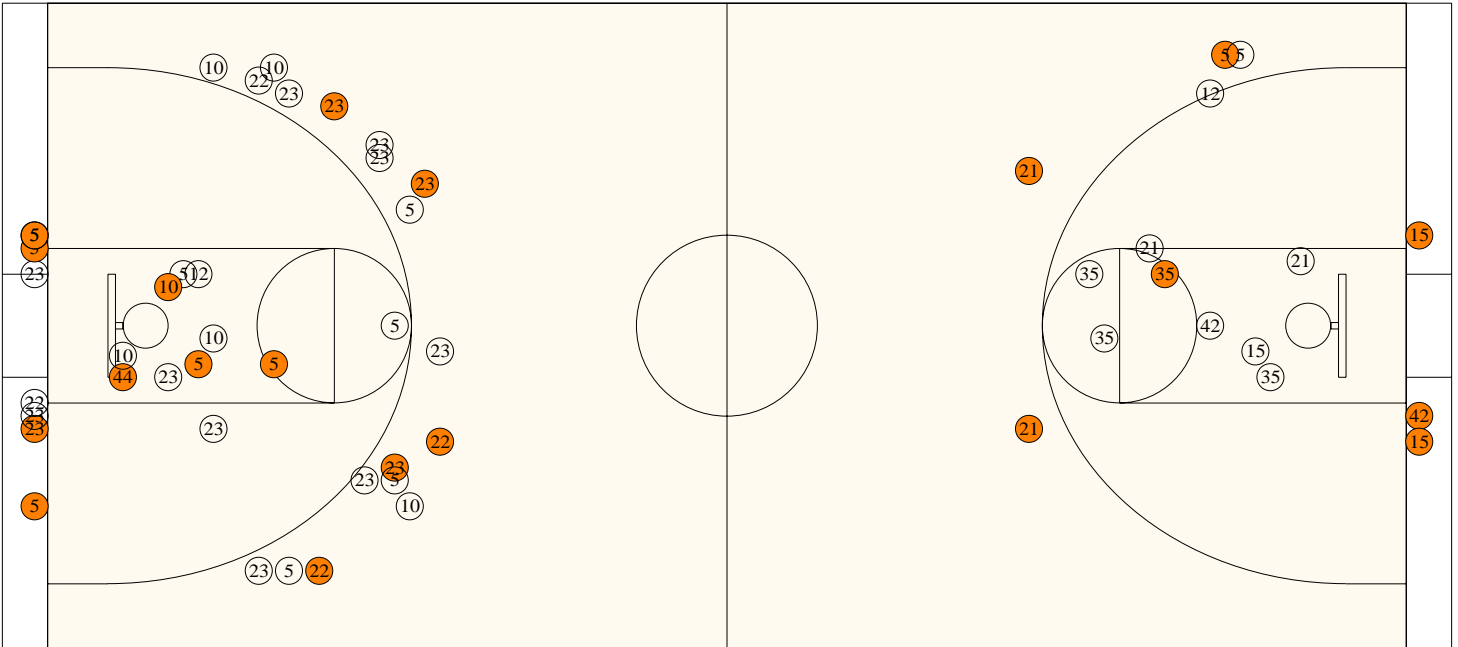
Lexington Christian Academy

Shooting	Pts	Pts	
2FG 5/11 (45.5%)	10	Pts/Shot	0.58
3FG 1/14 (7.14%)	3	2nd Eff Pts	2
TFG 6/25 (24.0%)		Pts off TO's	2
FT 2/2 (100%)	2	3Pt Eff	-23.2
Scoring Distribution: 2FG 66.7% 3FG 20.0% FT 13.3%			

Elizabethtown

Shooting	Pts	Pts	
2FG 5/13 (38.5%)	10	Pts/Shot	1.17
3FG 4/7 (57.1%)	12	2nd Eff Pts	4
TFG 9/20 (45.0%)		Pts off TO's	6
FT 5/6 (83.3%)	5	3Pt Eff	+31.5
Scoring Distribution: 2FG 37.0% 3FG 44.4% FT 18.5%			

SECOND HALF



Lexington Christian Academy

2FG 8/19 (42.1%)	16	Pts/Shot	0.88
3FG 5/18 (27.8%)	15	2nd Eff Pts	16
TFG 13/37 (35.1%)		Pts off TO's	18
FT 4/6 (66.7%)	4	3Pt Eff	-0.3
Scoring Distribution: 2FG 45.7% 3FG 42.9% FT 11.4%			

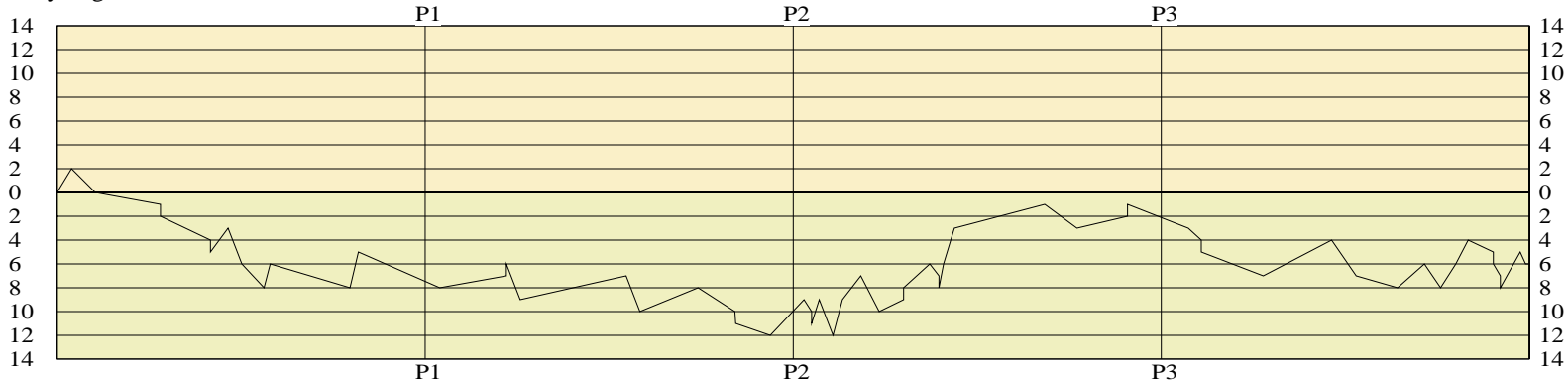
Elizabethtown

2FG 4/11 (36.4%)	8	Pts/Shot	1.26
3FG 3/5 (60.0%)	9	2nd Eff Pts	2
TFG 7/16 (43.8%)		Pts off TO's	10
FT 12/14 (85.7%)	12	3Pt Eff	+35.8
Scoring Distribution: 2FG 27.6% 3FG 31.0% FT 41.4%			

KHSAA Basketball - Scoring Timeline Report
 Lexington Christian Academy Lady Eagles vs. Elizabethtown Lady Panthers
 DATE: 03/12/09 TIME: 12 pm EST SITE: Diddle Arena-Bowling Green, KY

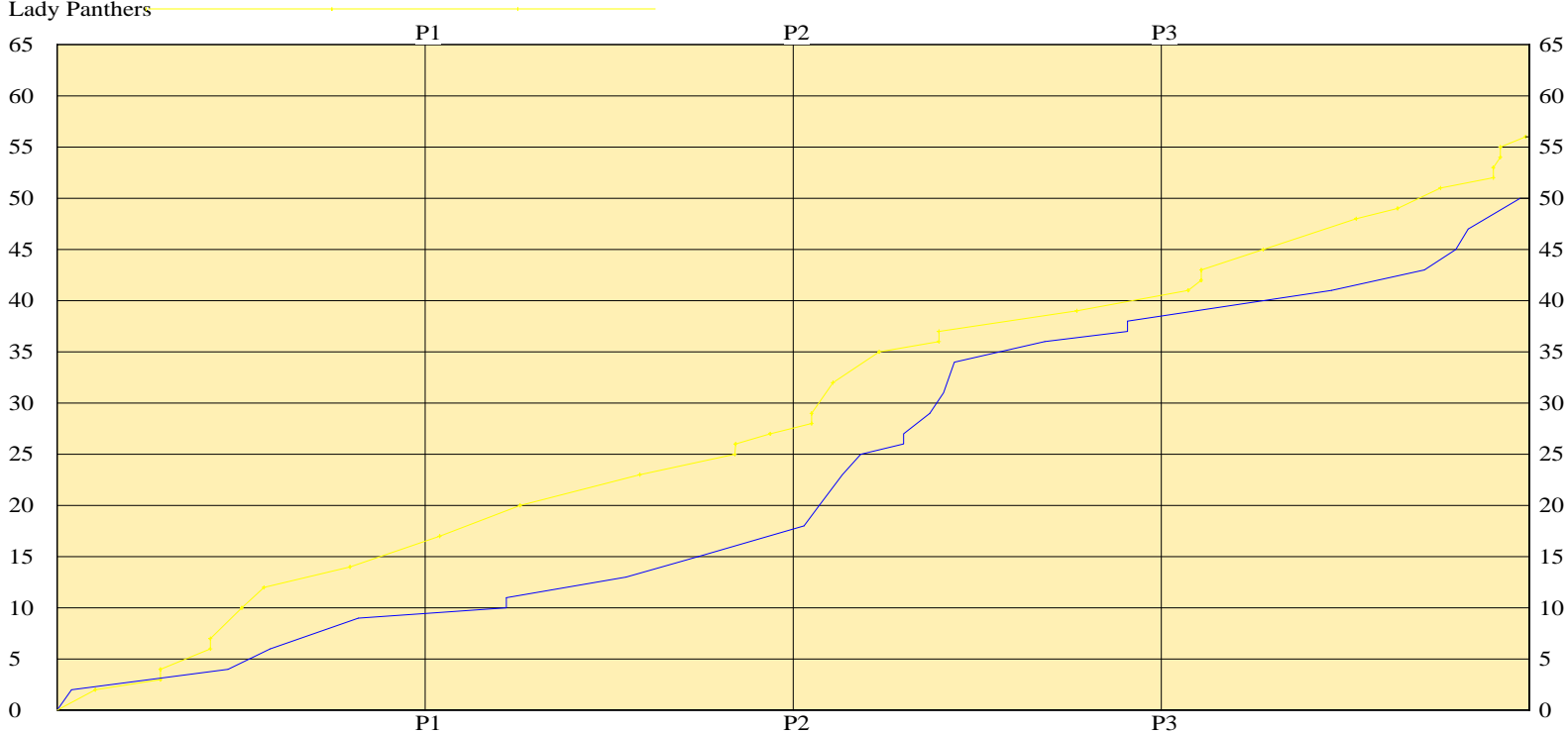
Lady Eagles

LEAD TIMELINE



Lady Panthers

SCORING TIMELINE



Largest Lead LCA 15 ELIZ 27 (12 pts) Lead Changes 1 Number of Ties 1

KHSAA Basketball - Play by Play Report - Scoring Only (pg 1)
Lexington Christian Academy Lady Eagles vs. Elizabethtown Lady Panthers
Date: 03/12/09 Time: 12 pm EST Site: Diddle Arena-Bowling Green, KY Attendance: N

Name	Action	Action	Score	Clock	Diff	Name	Action	Action
C Dorton	FG Made	C Clifton Assist	2-0	1 7:41	+2 (L1)			
			2-2	1 7:10	(T1)	A Lockett	Layup Made	A Jones Assist
			2-3	1 5:45	-1 (L2)	N Greenwell	FT Made	
			2-4	1 5:45	-2	N Greenwell	FT Made	
			2-6	1 4:40	-4	A Jones	FG Made	T Lucas Assist
A Martin	Personal Foul		2-7	1 4:40	-5	A Jones	FT Made	
S B Barnette	FG Made	K Mitchuson Assist	4-7	1 4:17	-3			
			4-10	1 3:59	-6	N Greenwell	3Pt Made	D Downs Assist
			4-12	1 3:30	-8	A Jones	Putback Made	
S B Barnette	Layup Made		6-12	1 3:22	-6			
			6-14	1 1:38	-8	A Jones	Putback Made	
S B Barnette	3Pt Made	R Cox Assist	9-14	1 1:27	-5			

End of Period Summary Lady Eagles 9 Lady Panthers 14

Largest Lead: Lady Eagles 4 Lady Panthers 12 (8 pts)

Lead Changes: 2 Ties: 1

Lead in Period: Lady Eagles 4 Lady Panthers 12 (8 pts)

Lead Changes: 1 Ties: 1 (this period)

4 for 3 oppo pts

Turnovers

7 for 0 oppo pts

1 for 0 pts

2nd Chances

3 for 4 pts

4/12 for 33.3 %

Field Goals

5/9 for 55.6 %

0/0 for 0.00 %

Free Throws

3/3 for 100 %

			9-17	2 7:41	-8	A Lockett	3Pt Made	J Deaderick Assist
S B Barnette	FT Made		10-17	2 6:14	-7			
S B Barnette	FT Made		11-17	2 6:14	-6			
			11-20	2 5:56	-9	N Greenwell	3Pt Made	A Jones Assist
S B Barnette	FG Made	R Cox Assist	13-20	2 3:38	-7			
			13-23	2 3:20	-10	D Downs	3Pt Made	A Jones Assist
A Martin	Layup Made		15-23	2 2:04	-8			
			15-25	2 1:16	-10	A Jones	Layup Made	
S B Barnette	Personal Foul		15-26	2 1:15	-11	A Jones	FT Made	
			15-27	2 0:30	-12	T Lucas	FT Made	

End of Period Summary Lady Eagles 15 Lady Panthers 27

Largest Lead: Lady Eagles 15 Lady Panthers 27 (12 pts)

Lead Changes: 2 Ties: 1

Lead in Period: Lady Eagles 15 Lady Panthers 27 (12 pts)

Lead Changes: 0 Ties: 0 (this period)

1 for 3 oppo pts

Turnovers

5 for 2 oppo pts

3 for 2 pts

2nd Chances

4 for 0 pts

2/13 for 15.4 %

Field Goals

4/11 for 36.4 %

2/2 for 100 %

Free Throws

2/3 for 66.7 %

C Clifton	3Pt Made	A Martin Assist	18-27	3 7:46	-9			
C Dorton	Personal Foul		18-28	3 7:36	-10	A Jones	FT Made	
			18-29	3 7:36	-11	A Jones	FT Made	
C Dorton	Putback Made		20-29	3 7:26	-9			
			20-32	3 7:08	-12	N Greenwell	3Pt Made	A Jones Assist
R Cox	3Pt Made	A Martin Assist	23-32	3 6:56	-9			
C Clifton	Layup Made	A Martin Assist	25-32	3 6:32	-7			
			25-35	3 6:08	-10	D Downs	3Pt Made	T Lucas Assist
A Martin	FT Made		26-35	3 5:36	-9	A Lockett	Personal Foul	
A Martin	FT Made		27-35	3 5:36	-8			
A Martin	FG Made		29-35	3 5:02	-6			

KHSAA Basketball - Play by Play Report - Scoring Only (pg 2)
Lexington Christian Academy Lady Eagles vs. Elizabethtown Lady Panthers
Date: 03/12/09 Time: 12 pm EST Site: Diddle Arena-Bowling Green, KY Attendance: N

Name	Action	Action	Score	Clock	Diff	Name	Action	Action
K Jacob	Personal Foul		29-36	3	4:50 -7	A Jones	FT Made	
			29-37	3	4:50 -8	A Jones	FT Made	
A Martin	Layup Made		31-37	3	4:44 -6			
C Clifton	3Pt Made	A Martin Assist	34-37	3	4:30 -3			
S B Barnette	FG Made		36-37	3	2:32 -1			
			36-39	3	1:50 -3	J Deaderick	FG Made	
S B Barnette	FT Made		37-39	3	0:44 -2			
S B Barnette	FT Made		38-39	3	0:44 -1			

End of Period Summary Lady Eagles 38 Lady Panthers 39

Largest Lead: Lady Eagles 15 Lady Panthers 27 (12 pts)

Lead Changes: 2 Ties: 1

Lead in Period: Lady Eagles 15 Lady Panthers 27 (12 pts)

Lead Changes: 0 Ties: 0 (this period)

4 for 3 oppo pts

Turnovers

7 for 11 oppo pts

9 for 10 pts

2nd Chances

3 for 0 pts

8/19 for 42.1 %

Field Goals

3/9 for 33.3 %

4/4 for 100 %

Free Throws

4/4 for 100 %

R Cox	Personal Foul		38-41	4	7:25 -3	A Jones	Layup Made	
			38-42	4	7:08 -4	N Greenwell	FT Made	
			38-43	4	7:08 -5	N Greenwell	FT Made	
			38-45	4	5:47 -7	A Lockett	Layup Made	A Jones Assist
C Clifton	3Pt Made		41-45	4	4:18 -4			
			41-48	4	3:46 -7	N Greenwell	3Pt Made	T Lucas Assist
			41-49	4	2:52 -8	A Jones	FT Made	
A Martin	Layup Made	R Cox Assist	43-49	4	2:17 -6			
			43-51	4	1:56 -8	A Lockett	Layup Made	A Jones Assist
A Martin	FG Made		45-51	4	1:36 -6			
A Martin	Layup Made		47-51	4	1:20 -4			
S B Barnette	Personal Foul		47-52	4	0:47 -5	A Jones	FT Made	
			47-53	4	0:47 -6	A Jones	FT Made	
			47-54	4	0:38 -7	N Greenwell	FT Made	
			47-55	4	0:38 -8	N Greenwell	FT Made	
R Cox	3Pt Made	A Martin Assist	50-55	4	0:12 -5			
			50-56	4	0:05 -6	N Greenwell	FT Made	

End of Period Summary Lady Eagles 50 Lady Panthers 56

Largest Lead: Lady Eagles 15 Lady Panthers 27 (12 pts)

Lead Changes: 2 Ties: 1

Lead in Period: Lady Eagles 41 Lady Panthers 49 (8 pts)

Lead Changes: 0 Ties: 0 (this period)

5 for 7 oppo pts

Turnovers

5 for 7 oppo pts

6 for 6 pts

2nd Chances

1 for 2 pts

5/18 for 27.8 %

Field Goals

4/7 for 57.1 %

0/2 for 0.00 %

Free Throws

8/10 for 80.0 %

OFFICIAL BASKETBALL BOX SCORE
 Elizabethtown Lady Panthers vs Lexington Christian Academy

03/12/09 12 pm EST
 Final Box Score

Diddle Arena
 Bowling Green, KY

No.	Elizabethtown Lady Panthers	Total FG		3-point		Free throw		Rebounds			F	TP	A	TO	BLK	STL	MIN
		FG	FGA	FG	FGA	FT	FTA	Off	Def	Tot							
10	Terra Lucas (G/F)	0	0	0	0	1	2	0	2	2	0	1	3	6	0	0	28:39
15	Adelaide Luckett (F)	4	6	1	1	0	0	4	1	5	4	9	0	5	0	3	21:58
42	Alex Jones (C)	5	12	0	0	9	10	3	9	12	3	19	6	2	3	0	31:40
5	Dorian Downs (G)	2	5	2	5	0	0	0	1	1	1	6	1	3	0	0	24:11
21	Natalie Greenwell (G)	4	7	4	5	7	8	2	8	10	0	19	0	5	0	2	30:14
35	Jasmine Deaderick (F/C)	1	5	0	0	0	0	0	0	0	0	2	1	2	0	1	13:48
12	Tara Gilpin (G)	0	1	0	1	0	0	0	0	0	0	0	0	0	0	0	9:30
3	Chelsea Kauffeld (G)	0	0	0	0	0	0	0	0	0	0	0	0	0	0	0	DNP
14	Hannah Hart (G)	0	0	0	0	0	0	0	0	0	0	0	0	0	0	0	DNP
24	KyMBER Berrow (F/C)	0	0	0	0	0	0	0	0	0	0	0	0	0	0	0	DNP
25	Denisha Nichols (F/C)	0	0	0	0	0	0	0	0	0	0	0	0	0	0	0	DNP
50	Darian Ditto (C)	0	0	0	0	0	0	0	0	0	0	0	0	0	0	0	DNP
Team (Included in Totals)								2	4	6							
Totals		16	36	7	12	17	20	11	25	36	8	56	11	24	3	6	160

Total FG%: 1st half 9 - 20 (45.0%) 2nd half 7 - 16 (43.8%) Game 16 - 36 (44.4%) Deadball
 3Pt FG%: 1st half 4 - 7 (57.1%) 2nd half 3 - 5 (60.0%) Game 7 - 12 (58.3%) rebounds
 FT%: 1st half 5 - 6 (83.3%) 2nd half 12 - 14 (85.7%) Game 17 - 20 (85.0%) 2

No.	Lexington Christian Academy	Total FG		3-point		Free throw		Rebounds			F	TP	A	TO	BLK	STL	MIN
		FG	FGA	FG	FGA	FT	FTA	Off	Def	Tot							
00	Killian Rose	0	0	0	0	0	0	0	0	0	0	0	0	0	0	0	DNP
2	Mimi Purdy	0	0	0	0	0	0	0	0	0	0	0	0	0	0	0	DNP
5	Anna Martin	6	18	0	5	2	2	4	4	8	3	14	5	5	0	5	30:17
10	Sarah Beth Barnette	5	12	1	6	4	6	8	3	11	4	15	0	0	3	5	32:00
11	Caitlin Panter	0	0	0	0	0	0	0	0	0	0	0	0	0	0	0	DNP
23	Courtney Clifton	4	19	3	13	0	0	1	0	1	2	11	1	3	0	3	32:00
22	Rachel Cox	2	9	2	7	0	0	1	0	1	4	6	3	3	0	0	30:35
12	Kristin Jacob	0	1	0	0	0	0	2	1	3	2	0	0	1	0	0	15:26
44	Caitlin Dorton	2	2	0	0	0	0	1	1	2	1	4	0	1	0	1	14:30
24	Kelli Mitchuson	0	1	0	1	0	0	0	0	0	0	0	1	0	0	0	5:12
32	Kendall Pennington	0	0	0	0	0	0	0	0	0	0	0	0	0	0	0	DNP
33	Olivia Eastham	0	0	0	0	0	0	0	0	0	0	0	0	0	0	0	DNP
55	Kelli Rhineheart	0	0	0	0	0	0	0	0	0	0	0	0	0	0	0	DNP
4	Katelin Bundy	0	0	0	0	0	0	0	0	0	0	0	0	0	0	0	DNP
42	Dorothy Panter	0	0	0	0	0	0	0	0	0	0	0	0	0	0	0	DNP
Team (Included in Totals)								2	1	3							
Totals		19	62	6	32	6	8	19	10	29	16	50	10	14	3	14	160

Total FG%: 1st half 6 - 25 (24.0%) 2nd half 13 - 37 (35.1%) Game 19 - 62 (30.6%) Deadball
 3Pt FG%: 1st half 1 - 14 (7.14%) 2nd half 5 - 18 (27.8%) Game 6 - 32 (18.8%) rebounds
 FT%: 1st half 2 - 2 (100%) 2nd half 4 - 6 (66.7%) Game 6 - 8 (75.0%) 1

Technical Fouls: None

Attendance: N

Officials: Ronnie Saylor, Steven Ridgeway, David Pentecost

Score by Period	1st	2nd	3rd	4th	Final	Record	Overall	Conf
Elizabethtown Lady Panthers	14	13	12	17	56	Lady Panthers		
Lexington Christian Academy	9	6	23	12	50	Lady Eagles		

Lady Eagles		Lady Panthers		Lady Eagles		Lady Panthers		Lady Eagles		Lady Panthers	
Points off Turnovers	20	16	Second Effort Points	18	6	Bench Points	0	2			
Points in the Paint	22	18	3 Point Points	18	21	Free Throw Points	6	17			
3pt Efficiency	-10.1	+33.3	Points/Shot	0.76	1.22	Defensive Stops	34	39			
Largest Lead	15	27	Lead Changes	1		Number of Ties	1				

Game comments: None